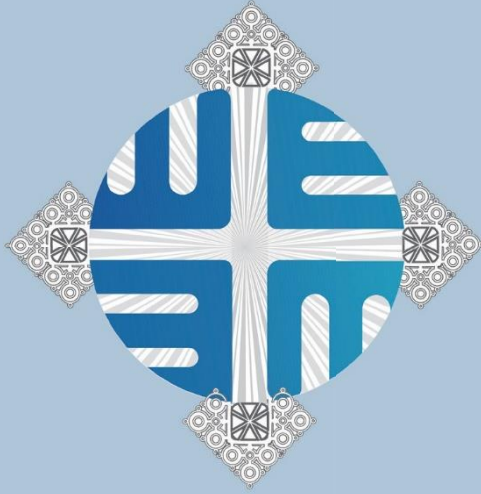


2022



WYCLIFFE
Ethiopia

Wycliffe Ethiopia

New Facility Project



NEW OPPORTUNITIES

New building project of Wycliffe Ethiopia to serve the language communities in the Horn of Africa

Dear friends of Wycliffe Ethiopia,

We praise God for His faithfulness, and we are grateful for your partnership with Wycliffe Ethiopia in Bible translation and Scripture engagement in Ethiopia, in the Horn of Africa and beyond.

Since its launch eight years ago in 2014, Wycliffe Ethiopia has been able, by the grace of God to expand its mission work slowly but steadily, and has been serving many minorities language groups in Ethiopia as well as in adjacent countries. As the ministry has been growing, the need for more office space has become urgent.

In the first years of its existence Wycliffe Ethiopia rented offices, but, as the increase of rent continually increases dramatically due to various instabilities, it became necessary for the organization to purchase a premise that could accommodate its ministry.

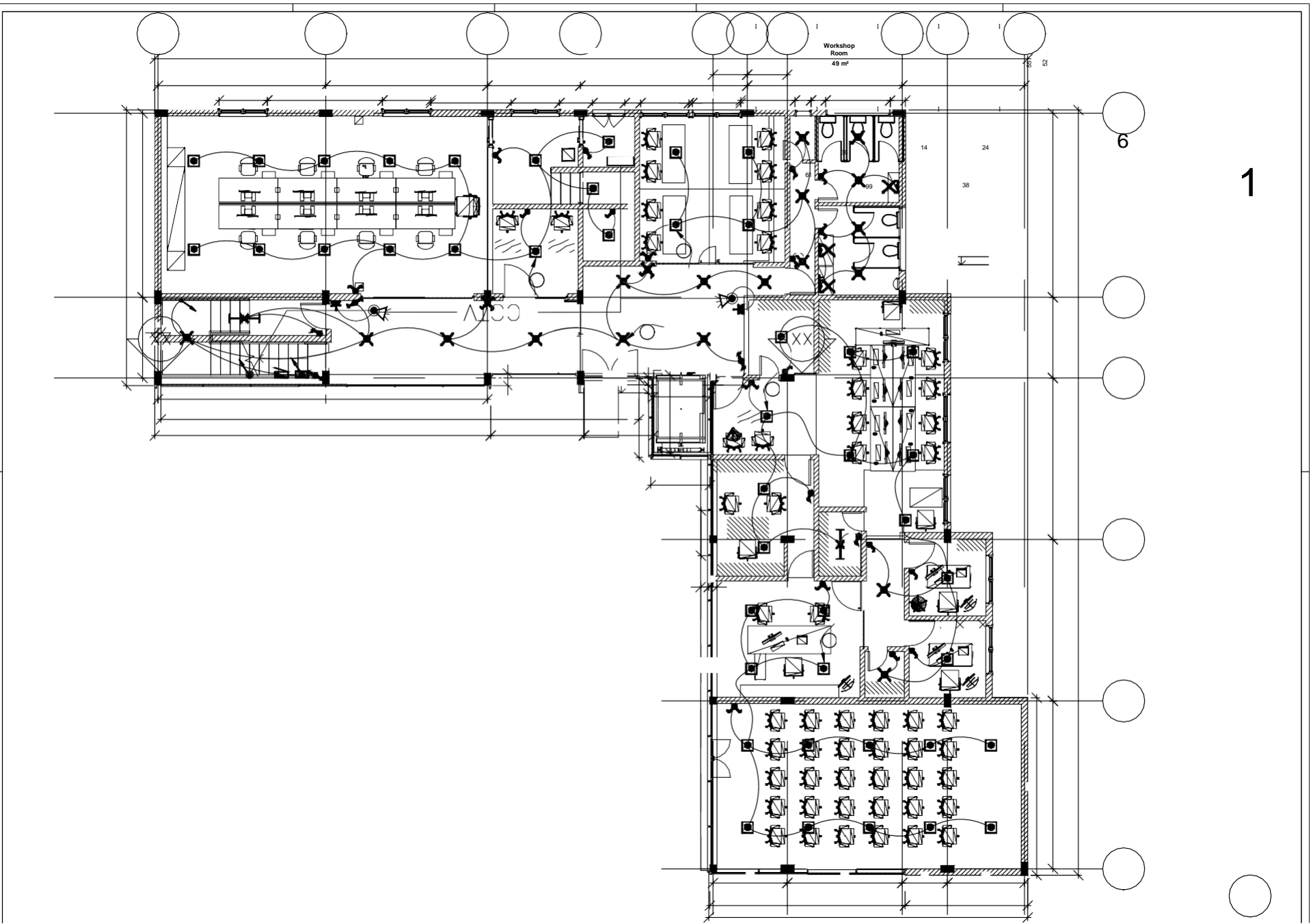
After a long and tiring search, God led us to a neat, small compound and provided the funds for the acquisition in 2019. After major renovations, the

house on the plot was turned into an open office and it served the ministry of Wycliffe Ethiopia very well. However, it was not big enough for larger training workshops and meetings. Therefore, Wycliffe Ethiopia still needed to rent another office for this purpose. The Print on Demand service moved to this location and the other rooms were used for Yemen and Eritrean translators, as well as for trainings, workshops, and meetings. Due to the constant instability in the Horn of Africa, we also had to rent another house in order to host Yemeni and Eritrean refugees that were displaced due to the ongoing conflict and instability in the region. The work and ministry of Wycliffe Ethiopia is expanding at a fast pace because the Lord is blessing us with His work.


Now, however, we are again in need of a bigger facility to host all of our operations into a single compound. And to this effect, we prayed and asked God for guidance and wisdom. It is amazing to see how God has been helping through and has answered our prayers. Some months ago, a school compound was offered on unbelievable conditions to Wycliffe Ethiopia. The owners are Christians who have served the Lord throughout their lives and still have a heart for ministry. Many have come begging for the plot of land because of its size and proximity to the city, but they refused because they wanted to give it for the Lord's work, all 2,000 m² (21,527.82 ft²) plot in Addis Ababa and moreover located in a central area. This is an extraordinary opportunity.

Wycliffe Ethiopia, therefore, stepped out in faith and paid a first tranche to show our commitment to obtain the place. For the remaining amount, Wycliffe Ethiopia was graciously given two more years.

Right: Architectural
Conception of the
future Ground
Floor of Wycliffe
Ethiopia



1



“Many of the countries surrounding Ethiopia are mainly closed to the Gospel of Jesus Christ.”

This new compound is a huge blessing for Wycliffe Ethiopia. It allows the organization not only to have enough office space for the main office staff in Addis Ababa but also provides rooms for training workshops and bigger halls for larger meetings and gatherings. Moreover, this new place will allow Wycliffe Ethiopia to serve the language communities at the Horn of Africa better. Many of the countries surrounding Ethiopia are mainly closed to the Gospel of Jesus Christ (e.g. Eritrea, Somalia, Somaliland, Sudan, and Yemen).

By God’s grace, Wycliffe Ethiopia has been able to start translation and scripture engagement projects for language groups in these countries. Some of these projects cannot be realized in the area of the language groups due to security reasons. The new office, therefore, will also serve as a base hosting Bible translation teams from restricted areas.

The new building further provides space for expanding the Print on Demand service. This service allows to print scripture portions and helps to get the Word of God out to the communities faster at a more economical price. It is also an income generating tool which provides funds for Bible translation and Scripture engagement.

Moreover, it is Wycliffe Ethiopia’s need to accommodate guest houses, cafeteria, kids’ room and others that would improve employees’ productivity and benefit the organization.

Since WE usually have guests from different countries, it is a great

challenge to find guest houses that are reasonably priced and easily accessible. Hence, investing on our own guest house will save great time and money in the future. It will also serve as means of income generating for the organization.

Workplace kids’ room is also another plan which will be on-site facility to provide space for employees’ children. WE is a family focused organization hence by providing an on-site kids’ room, it plans to improve employees’ concentration and productivity on the job with lower absenteeism.

Developing the IT system will also support the work of the staffs greatly. A secured storage and climate-controlled room for the IT system will be great input as well as managing meeting rooms and video conferencing rooms.

In the long run, all these investments on the new work space will benefit WE significantly in its effectiveness and as income generating means.

We believe God has entrusted us with a great work in the Horn of Africa. The task of reaching the language groups with the Word of God in this region, though, cannot be achieved by Wycliffe Ethiopia alone. We are very glad that you have chosen to support this work



Top and Bottom Le : New Facility

Bottom Right: Current Facility



WE BELIEVE GOD HAS ENTRUSTED US WITH A GREAT WORK IN THE HORN OF AFRICA.

of the Lord and have partnered with Wycliffe Ethiopia in one or another way.

We would like to reiterate that the acquiring of the new compound has been a giant leap of faith. There is still a lot of work ahead for Wycliffe Ethiopia to make this place a Bible translation and Scripture engagement center for the Horn of Africa. Financial resources, technical support and volunteers for various construction works are needed.

We, from Wycliffe Ethiopia are kindly asking you to partner with us also in the purchase and renovation work for the new office compound. Would you please pray for us and consider to support us financially and/or with volunteers? For the renovation of the existing school building, we would need construction specialists like masons, plumbers, painters, electricians etc. Also, IT infrastructure specialists are most welcome.

Thank you for your partnership and for helping Wycliffe Ethiopia to reach out to the more than 160 language communities at the Horn of Africa.

It is our wish to be able to move into the new compound until the beginning of 2023.



WYCLIFFE
Ethiopia

WYCLIFFE ETHIOPIA

P.O. Box 144 code 1056

Addis Ababa

+251113693294 /

+251113698276

info@wycliffeethiopia.org

MAKE A DONATION

Join us on this mission by contributing financially. Please read below for to find an option to give that is suitable for you.

To Give by
Check: WE-
LEAD
P.O. BOX 3

100 S Verona Ave, Avon Park, Fl 33826

To Give by Wire
Transfer: WE-LEAD
Bank account #: 8918207286

For a domestic wire (direct deposit),
routing number#: 121000248
Wells Fargo Bank - 420 Montgomery Street, San Francisco CA 94104

For an international wire, SWIFT Code: WFBIUS6S

To Send Through Zelle®:
Use the phone #: (402)-570-4511
Insert the amount you would like to give
Review and add memo
Hit 'confirm'

No goods or services were rendered for your donation.
WE-LEAD is a 501(c) 3 tax-exempt nonprofit organization. EIN# 85-3542943